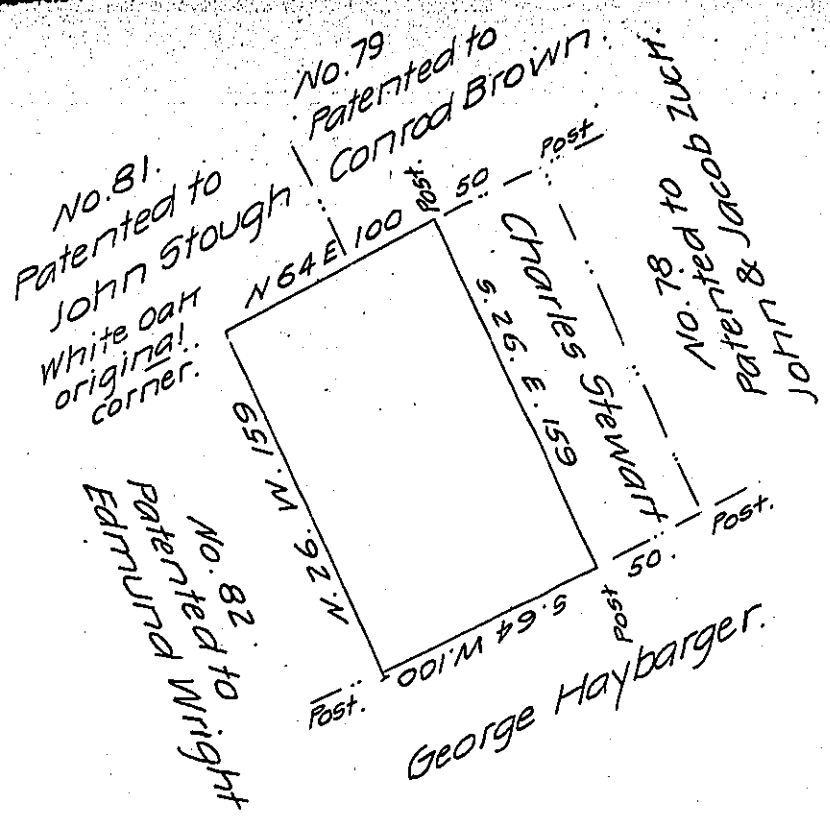


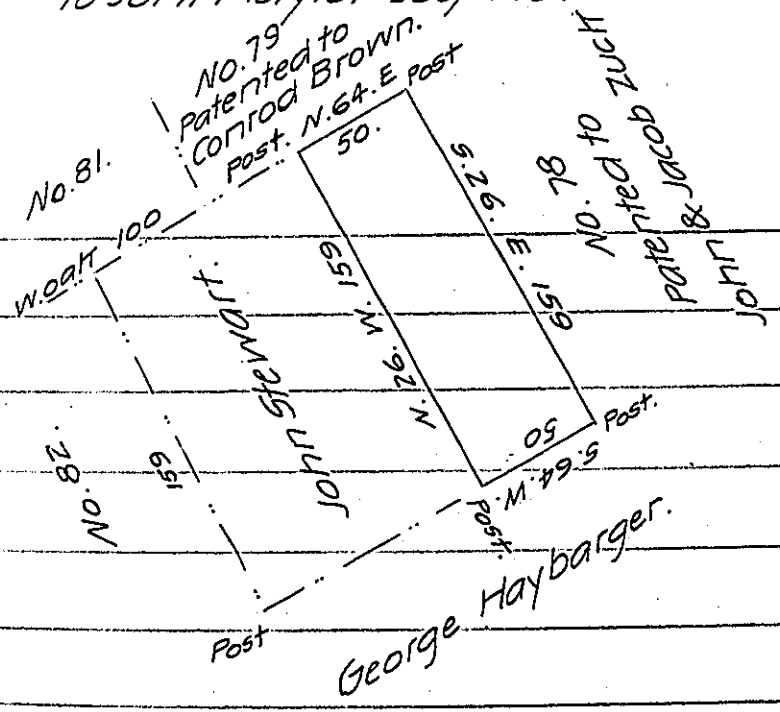
FORM NO 1.



A draught of part of Reserve Tract No. 80. in the Erie Reserve, Mill Creek township, Erie County. Surveyed the 21st day of November, 1837, for John Stewart by virtue of his purchase, settlement and improvement. Containing ninety nine acres and sixty perches of land.

To John Taylor Esq S. G.

S. Skinner D.S.



A draught of part of Reserve Tract No. 80 in the Erie Reserve Mill Creek township, Erie County. Surveyed the 21st day of November 1837, for Charles Stewart by virtue of his father John Stewart's purchase, settlement and improvement. Containing forty nine acres and one hundred and ten perches of land.

S. Skinner D.S.

To John Taylor Esq S.G.

IN TESTIMONY that the above is a copy of the original remaining on file in the Department of Internal Affairs of Pennsylvania, made conformably to an Act of Assembly approved the 16th day of February, 1833, I have hereunto set my Hand and caused the Seal of said Department to be affixed at Harrisburg, this twenty-sixth day of May 1908

Henry Howard
Secretary of Internal Affairs.